



## Chapter 7 Word Search

Name \_\_\_\_\_

Fill in the missing term in each sentence AND find it in the word search puzzle below.

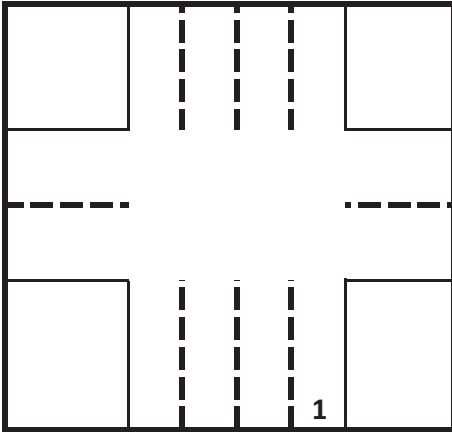
- 1 A(n) \_\_\_\_\_ intersection is protected by a signal or sign. \_\_\_\_\_
- 2 The \_\_\_\_\_ is the distance between vehicles. \_\_\_\_\_
- 3 A(n) \_\_\_\_\_ intersection has no signs or signals to regulate traffic. \_\_\_\_\_
- 4 When you are \_\_\_\_\_, you are turning into lanes of other traffic. \_\_\_\_\_
- 5 A(n) \_\_\_\_\_ left turn is made on a green arrow. \_\_\_\_\_
- 6 A(n) \_\_\_\_\_ is a large, white X-shaped sign beside a railroad crossing. \_\_\_\_\_
- 7 The privilege of immediate use of the roadway is called \_\_\_\_\_ of way. \_\_\_\_\_
- 8 A round, yellow sign is posted at a \_\_\_\_\_ crossing. \_\_\_\_\_
- 9 A(n) \_\_\_\_\_ left turn is made at an intersection with no arrow. \_\_\_\_\_
- 10 To \_\_\_\_\_ is to allow another driver to proceed first. \_\_\_\_\_

S	T	B	L	I	Z	Z	A	R	D	C	O	N	T	R
T	O	U	U	N	C	O	N	T	R	O	L	L	E	D
A	O	N	A	Y	L	Q	J	O	I	N	I	N	G	O
L	R	F	R	E	S	H	I	G	H	T	L	E	O	B
E	A	X	I	E	L	D	I	L	E	R	I	G	H	U
I	N	B	G	L	R	A	I	L	R	O	A	D	R	C
N	G	R	H	D	S	D	Y	I	E	L	D	A	Y	K
B	E	A	T	G	R	E	E	N	B	L	U	E	C	I
L	O	O	P	R	O	T	E	C	T	E	D	U	O	D
U	N	P	R	O	T	E	C	T	E	D	B	A	N	P
E	S	C	A	U	R	O	L	L	S	S	C	T	T	U
D	T	F	I	P	S	R	O	E	S	C	T	E	R	R
D	O	A	L	N	C	P	R	O	T	E	C	T	O	P
Y	P	G	A	S	R	W	R	I	T	E	C	K	L	L
G	R	E	E	N	S	C	B	S	S	B	U	C	K	E

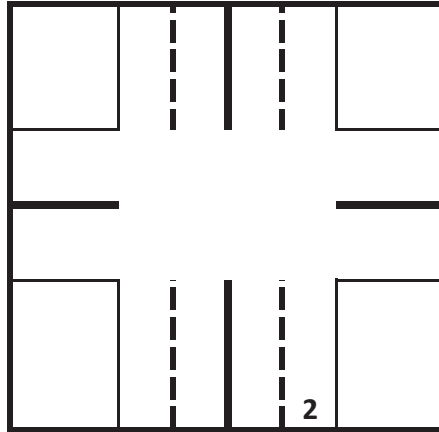


## Choose the Correct Turn

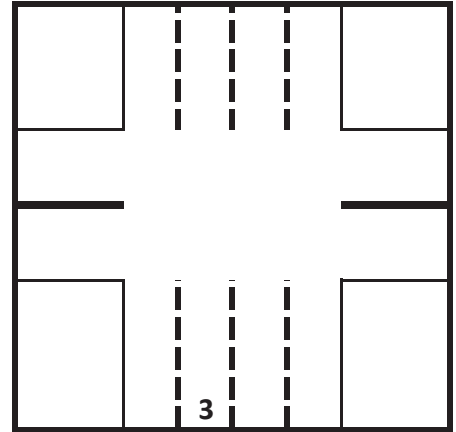
Draw a line to show the correct path to make the turn indicated below each picture. You may need to change lanes prior to making the turn. Your car is the number in each scenario.



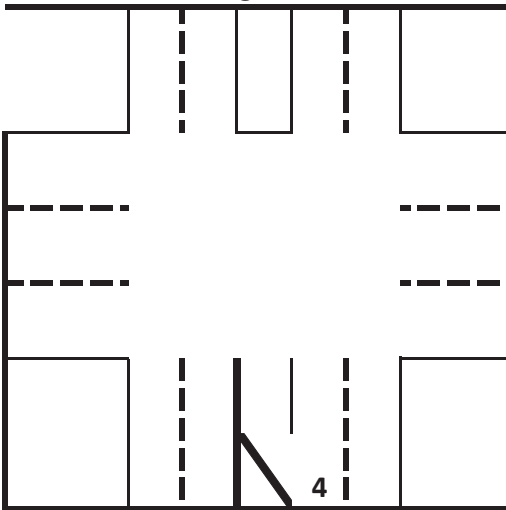
Make a right turn



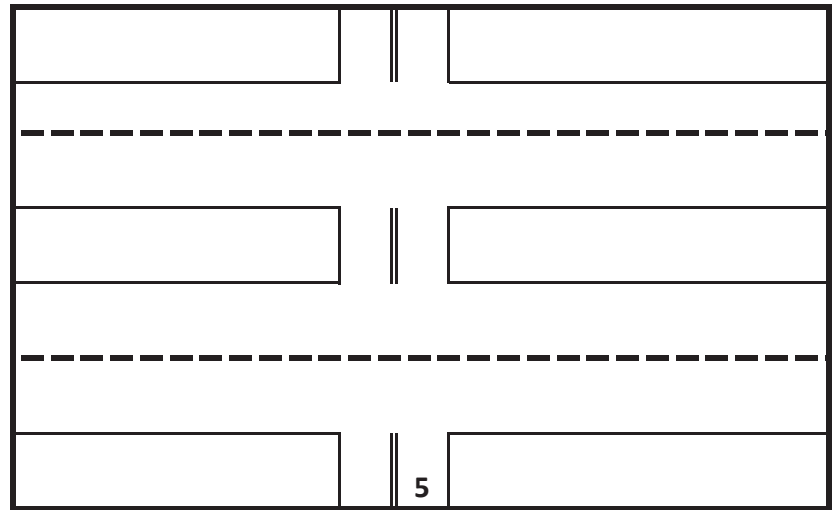
Make a left turn



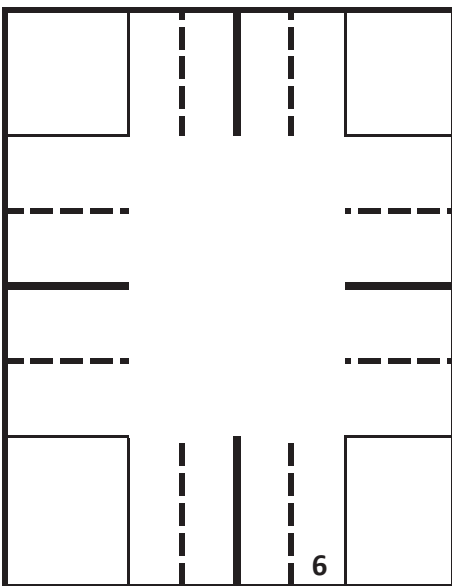
Make a left turn



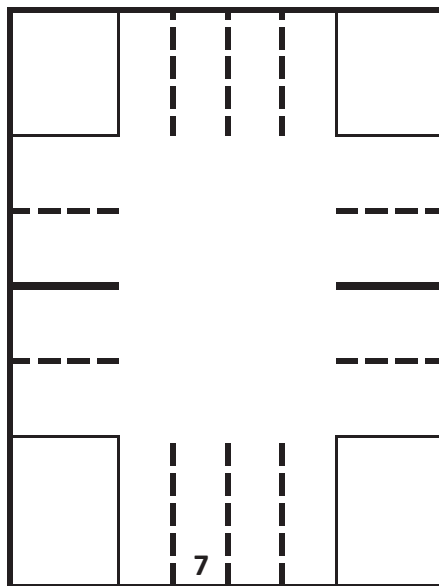
Make a left turn



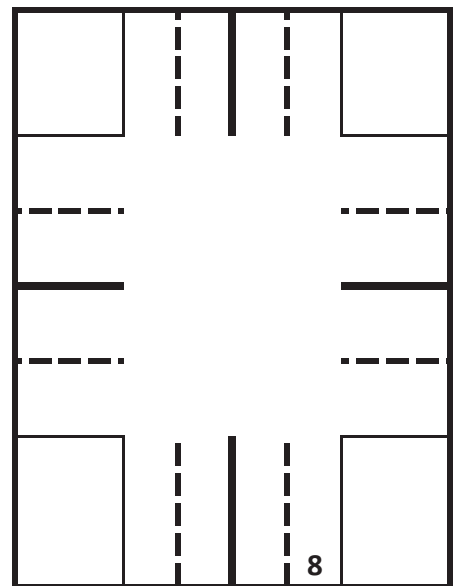
Make a left turn



Make a right turn



Make a left turn



Make a left turn



## Chapter 8 Pick a Word

Name \_\_\_\_\_

Date \_\_\_\_\_

### Pick a Word

Use the word or words to complete each statement.

Clutch  
Front Brake  
Headlight  
Instability

Motor Scooter  
No Zones  
Protective Equipment  
Reflective

Traction  
Traffic Noise

- \_\_\_\_\_ 1. A motorcycle's small size, handling and \_\_\_ can cause problems in traffic.
- \_\_\_\_\_ 2. Large blind spots in front, sides, and rear of large trucks are known as \_\_\_.
- \_\_\_\_\_ 3. Even during daylight hours, it's easier to identify motorcyclists if they have their \_\_\_ on.
- \_\_\_\_\_ 4. Helmets and gloves are examples of \_\_\_\_\_.
- \_\_\_\_\_ 5. A hand lever on the right handlebar of a motorcycle controls the \_\_\_\_\_.
- \_\_\_\_\_ 6. Motorcyclists can have balance problems if they do not work the throttle and \_\_\_\_\_ properly.
- \_\_\_\_\_ 7. To be visible, motorcyclists should wear \_\_\_ clothing at night.
- \_\_\_\_\_ 8. A low powered 2-wheeled vehicle is known as a \_\_\_\_\_.
- \_\_\_\_\_ 9. Helmets, the noise of the cycle, and \_\_\_ make it difficult for motorcyclists hear.
- \_\_\_\_\_ 10. In adverse weather conditions, reduce \_\_\_ is far more critical for motorcyclists than for drivers of other types of vehicles.